

<b>Chem 112000-2 Winter 2022 Final Review</b>
---

The following questions cover content from the entire quarter but in no way represent everything that you can be tested on. These questions should be supplemented with understanding of all homework problems, discussion worksheet problems, as well as the 3 midterms. Furthermore, the only additional material that should be needed to complete these questions is a calculator and a periodic table (in addition to the constants/values provided on this front page).

**Some useful constants:**

1. Boltzmann Constant  $k = 1.38 \times 10^{-23}$  J/K
2. Avogadro Number  $N_A = 6.02 \times 10^{23}$
3. Speed of light is  $3 \times 10^8$  m/s
4. Planck's constant is  $6.626 \times 10^{-34}$  Js
5. Mass of electron is  $9.1 \times 10^{-31}$  kg
6. 1 Joule is  $6.42 \times 10^{18}$  eV
7. Gas Constant  $R = 8.314$  J / (mol K) = 0.0821 (1 atm)/(mol K) = 2.00 cal/(mol K)
8. Specific heat capacity of ethanol:  $c_{gas} = 1.702$  J/g·K and  $c_{liquid} = 2.443$  J/g·K
9. Normal boiling point of ethanol is 78.4°C
10.  $K_a$  of HCN is  $4.9 \times 10^{-9}$
11.  $K_a$  of HNO<sub>2</sub> is  $4.6 \times 10^{-4}$
12.  $K_b$  of NH<sub>3</sub> is  $1.8 \times 10^{-5}$
13.  $K_{sp} = 8.90 \times 10^{-17}$  for Ag<sub>3</sub>PO<sub>4</sub>

1. For the following questions, select the ONE correct answer for each multiple choice question.

(a) Which of the following is true of an unsaturated solution?

A)  $Q > K_{sp}$

B)  $Q < K_{sp}$

C)  $Q = K_{sp}$

D)  $Q = K_{sp}^{-1}$

E)  $Q = K_{sp}^2$

(b) The initial product to reactant ratio for an equilibrium reaction is found to be  $2.40 \times 10^5$ . If the reaction must shift in the reverse (backwards) direction to reach equilibrium, which of the following is a possible value for the equilibrium constant,  $K_{eq}$  for this reaction?

A)  $-2.40 \times 10^5$

B)  $2.40 \times 10^{-5}$

C)  $2.40 \times 10^5$

D)  $2.40 \times 10^{15}$

E) 0

(c) The following equilibrium was established in a reaction flask



Which of the following actions would result in an increase in  $[X]$  in the reaction flask?

A) Adding more solid Y

B) Adding a catalyst

C) Increasing pressure on the flask

D) Increasing the flask's volume

E) None of the above

- (d) What is the  $K_a$  for a 0.10 M weak acid solution that is found to be 1.50% ionized?
- A)  $1.5 \times 10^{-3}$
  - B) 1.5
  - C) 0.23
  - D)  $2.3 \times 10^{-5}$
  - E)  $2.3 \times 10^{-6}$
- (e) Which of the following combinations of equal volumes of solution will result in a buffer?
1. 0.1 M HCl + 0.1 M NH<sub>3</sub>
  2. 0.1 M HNO<sub>2</sub> + 0.05 M NaOH
  3. 0.05 M HNO<sub>2</sub> + 0.05 M NH<sub>3</sub>
- A) 1 only
  - B) 2 only
  - C) 3 only
  - D) 1 and 3 only
  - E) 2 and 3 only
- (f) Who discovered the exact location of electrons in atoms?
- A) Rutherford
  - B) Bohr
  - C) Schrodinger
  - D) Heisenberg
  - E) None of the above
- (g) Which of the following is certainly **true** about a single, neutral atom of manganese?
- A) It has a mass of exactly 54.95 atomic mass units.
  - B) Its two highest energy electrons are located in a spherically-shaped orbital.
  - C) Its nucleus contains as many protons as it does neutrons.
  - D) To form a +1 cation, an electron will be removed from a d orbital.
  - E) It contains unpaired electrons.

- (h) Which of the following statements regarding Valence Bond Theory is **not** true?
- A) With a set of hybridized atomic orbitals, half of the orbitals are anti-bonding orbitals.
  - B) Lone pairs of electrons on the central atom of a molecule are located in hybrid orbitals.
  - C) There are four orbitals in a set of  $sp^3$  hybridized orbitals.
  - D) An orbital hybridization of  $sp^4$  is impossible, even in a trigonal bipyramidal molecule.
  - E) An atom of phosphorus does not need to promote any electrons before it can hybridize its orbitals to engage in bonding with hydrogen atoms to form the molecule  $PH_3$ .
- (i) Select the atom or ion with the incorrect electronic configuration:
- A) Mo:  $[Kr]5s^14d^5$
  - B)  $Cu^+$ :  $[Ar]4s^13d^9$
  - C) Ce:  $[Xe] 6s^25d^14f^1$
  - D)  $Eu^{+2}$ :  $[Xe]4f^7$

2. Would you expect a solution of aqueous ammonium cyanide to be acidic, basic, or neutral? As part of your explanation, please include chemical equations showing how relevant particles react in the aqueous solution to impact the pH.

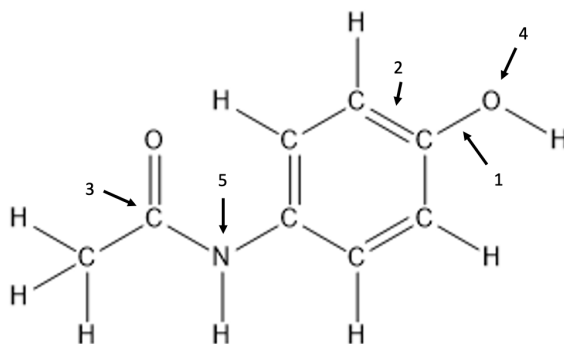
3. What minimum volume of pure water would be needed to dissolve exactly 1.00 g of  $\text{Ag}_3\text{PO}_4$ ? (Assume the volume occupied by the solid doesn't contribute to the overall solution volume.)

4. Imagine that a stable atom of  ${}_{117}^{296}\text{Q}$  were discovered.
- Write the abbreviated (noble gas shortcut) ground state electron configuration for Q.
  - Which element would you expect Q to be most similar to in terms of chemical reactivity? Why?
  - Write a set of quantum numbers that would represent a valence electron in the highest energy orbital occupied in an element of Q.
  - Would you expect a neutral atom of Q to be paramagnetic? Why?
  - To make an atom of this nuclide smaller in size, would you want to add or take away an electron? Explain.

5. When a glass tube full of hydrogen gas is electrified, we only see 3 specific wavelengths of light when viewing the tube through prism glasses. Respond to each of the following related questions, using **100 words or fewer** for each response.
- Describe the atomic level process that leads to the production of visible light in this experiment.
  - Why do we only see specific, distinct wavelengths of light in that experiment as opposed to the full rainbow spectrum?
  - Were those the only wavelengths of electromagnetic radiation given off during the process of giving energy to the hydrogen atoms? Explain.
6. Consider the following three species:  $\text{O}_2$ ,  $\text{O}_2^{2+}$ , and  $\text{O}_2^{2-}$ .
- How do these three species compare in terms of bond length?
  - How can  $\text{O}_2$  be magnetic even though it has an even number of total valence electrons?

7. In terms of electron configuration, shielding, and/or effective nuclear charge, explain the overall location of the most reactive non-metals on the Periodic Table (Don't just state trends!)

8. Consider the following molecule of acetaminophen (Tylenol), in which all bonds between atoms are shown but any lone pairs that exist on atoms are not shown:



- What are the hybridization of the orbitals in C and O, respectively in bond 1?
- How many  $\sigma$  and  $\pi$  bonds, respectively, are involved in bond 2?
- What should the geometry of the molecule be around atom 3?
- What would you estimate the C-O-H bond angle to be around atom 4?
- What kinds of orbital does the lone pair of electrons on atom 5 occupy?
- Which carbon/oxygen bond in the molecule should be the longest? Circle it.
- Which hydrogen is the most acidic? Box it.



9. Consider the ionization of pure water:  $\text{H}_2\text{O} (\text{l}) \rightleftharpoons \text{H}^+ (\text{aq}) + \text{OH}^- (\text{aq})$ .

T [ $^{\circ}\text{C}$ ]	$K_w$
10	$2.93 \times 10^{-15}$
25	$1.00 \times 10^{-14}$
40	$2.92 \times 10^{-14}$

(a) Is the forward process endothermic or exothermic? Explain using the table of data provided.

(b) How would you expect the pH of pure water to change as the temperature increases?

(c) Is pure water at higher temperatures acidic, basic, or neutral? Explain.

10. 216.2 kJ of energy are given off as 235.0 grams of ethanol ( $\text{CH}_3\text{CH}_2\text{OH}$ ) are cooled in a sealed flask from  $100^\circ\text{C}$  down to  $60.0^\circ\text{C}$ .

(a) Given this (along with data on the front page), calculate the vapor pressure (in mm Hg) of the ethanol in the container once it reaches a temperature of  $60.0^\circ\text{C}$ .

(b) The vapor pressure of propane ( $\text{CH}_3\text{CH}_2\text{CH}_3$ ) at  $60.0^\circ\text{C}$  is significantly higher than that of ethanol at the same temperature, even though their molar masses are quite similar. Explain why.

11. Determine the pH of each of the following solutions to two decimal points.

(a) Solution A: A 125 mL solution of 0.230 M  $\text{Ba}(\text{OH})_2$ .

(b) Solution B: Solution A + 200 mL of 0.185 M  $\text{HNO}_2$ .

(c) Solution C: Solution B + another 200 mL of 0.185 M  $\text{HNO}_2$ .

- 
12. How many grams of KOH must be added to 2.00 total L of a buffer solution made up of 0.125 M HF and 0.235 M KF in order to change its pH by 0.20 pH units? (Assume no change in total solution volume upon addition of solid.)

13. (a) Using the materials provided below, describe precisely how you would make 3.0 L of a pH 10.2 buffer solution. Indicate the exact quantities (in units of L or grams) of each component that would be needed to establish your buffer system (You must use exactly 250 mL of which ever acid or base you choose.) Show all relevant calculations.

Acetic acid	$\text{HCH}_3\text{CO}_2$	$K_a = 1.8 \times 10^{-5}$
Chlorous acid	$\text{HClO}_2$	$K_a = 1.1 \times 10^{-2}$
Iodic acid	$\text{HIO}_3$	$K_a = 1.7 \times 10^{-1}$
Ammonia	$\text{NH}_3$	$K_b = 1.8 \times 10^{-5}$
Aniline	$\text{C}_6\text{H}_5\text{NH}_2$	$K_b = 3.9 \times 10^{-10}$
Methylamine	$\text{CH}_3\text{NH}_2$	$K_b = 4.4 \times 10^{-4}$

Table 1: Dissociation Constants at 25°C

*Materials provided:*

- 1.5 M solutions of each acid/base in the table.
- Unlimited masses of each of the following:  $\text{NaCH}_3\text{CHO}_2$  (s),  $\text{NH}_4\text{Cl}$  (s),  $\text{NaClO}_4$  (s),  $\text{CH}_3\text{NH}_3\text{Cl}$  (s),  $\text{NaIO}_3$  (s),  $\text{C}_6\text{H}_5\text{NH}_3\text{Cl}$  (s).
- Deionized water

- (b) After you've made the buffer in part (a), you add in 12.5 g of  $\text{Sr}(\text{OH})_2$  (s) and 50.0 mL of 2.2 M HCl. What is the final pH of the solution after everything has reacted?

- 
14. Draw a picture showing all molecular orbitals created by taking linear combination of all 2p orbitals with each other. Label them from lowest energy to highest energy and state each whether g, u, or no symbol applies.

15. Draw a picture showing a linear combination of atomic orbitals that each produce one molecular orbital containing 2 nodes. Note the nodes must involve the internuclear axis. Please label the atomic and molecular orbitals and state whether each is g or u.



- 
- (e) Which subshell will the electron be emitted from in the gaseous gold atoms? Estimate  $Z_{eff}$  for this electron.
- (f) Estimate the orbital energy for the electron that is ejected during ionization.
- (g) Estimate the first ionization energy for gold using the orbital energy. How close did we get to the experimental value? If there are discrepancies comment on them
- (h) If you did the previous parts correctly, you will have used the Hartree approximation and Koopman's theorem. What are each's key assumption. Finally, identify which parts above you used each for.